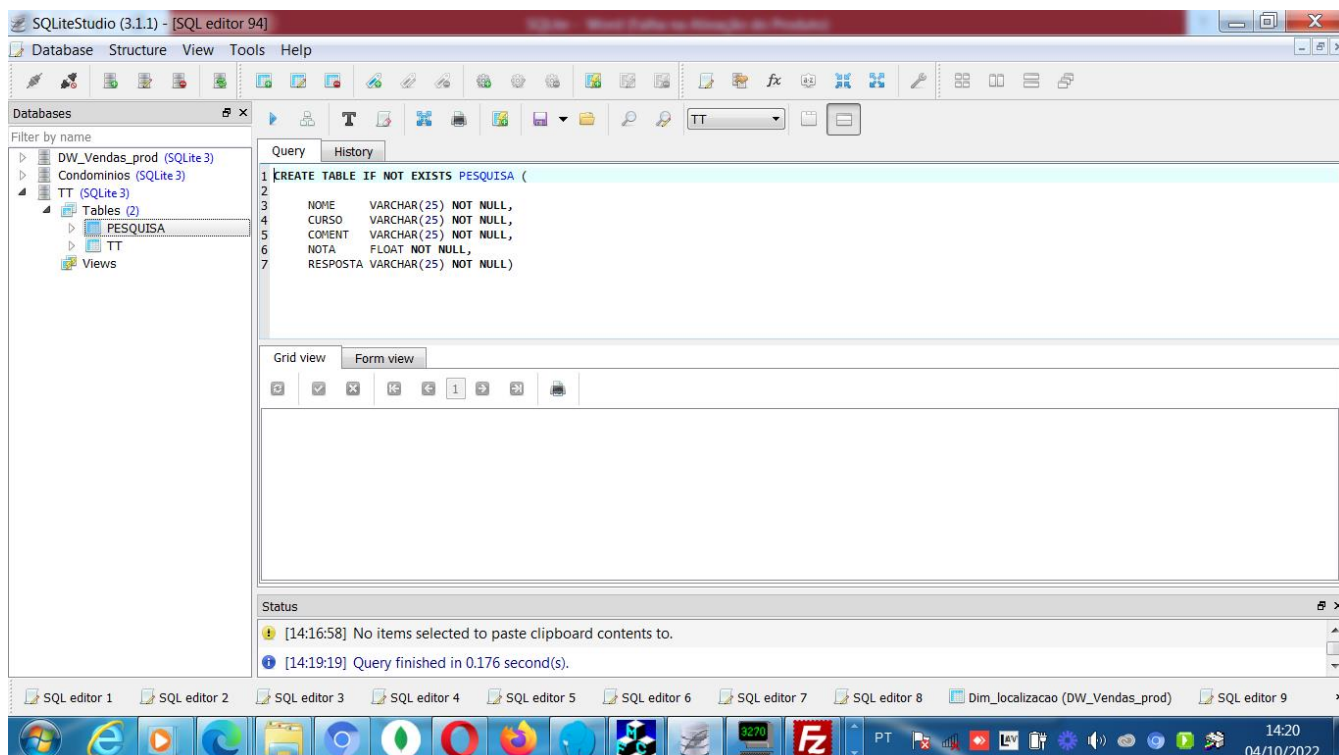
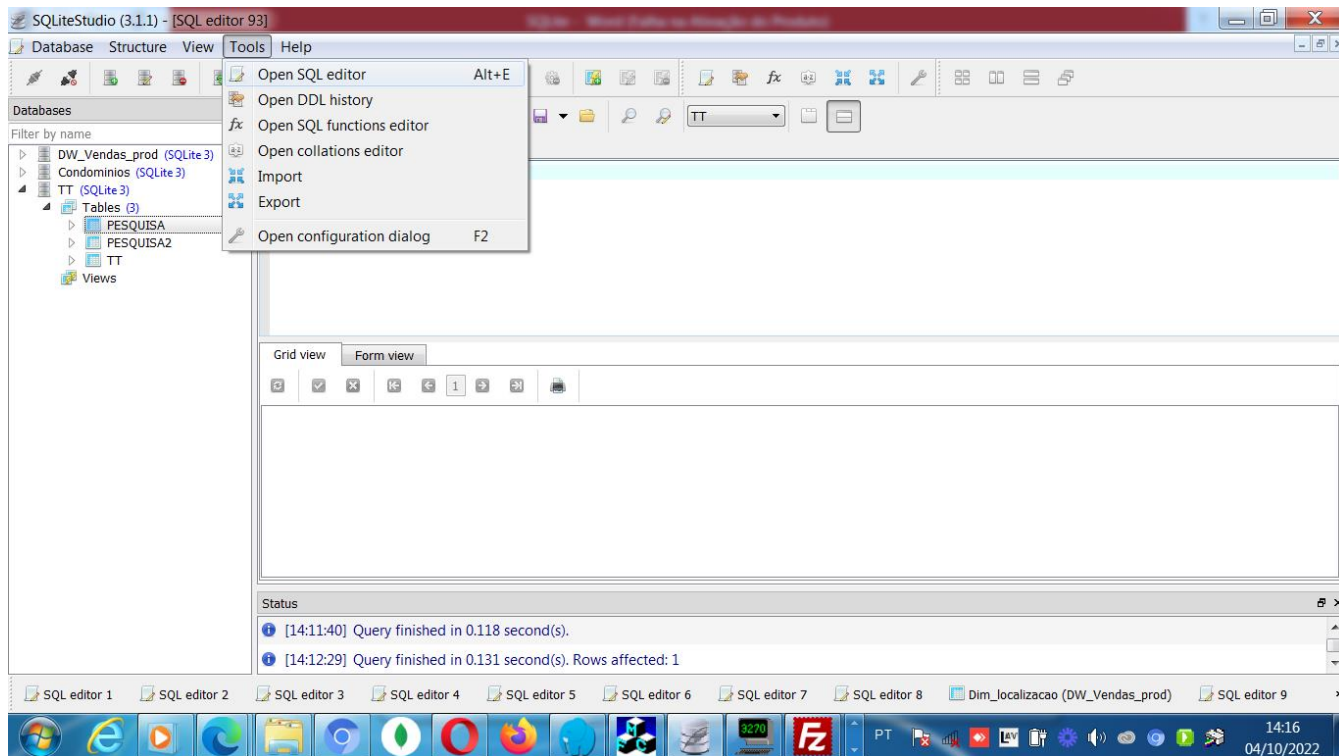


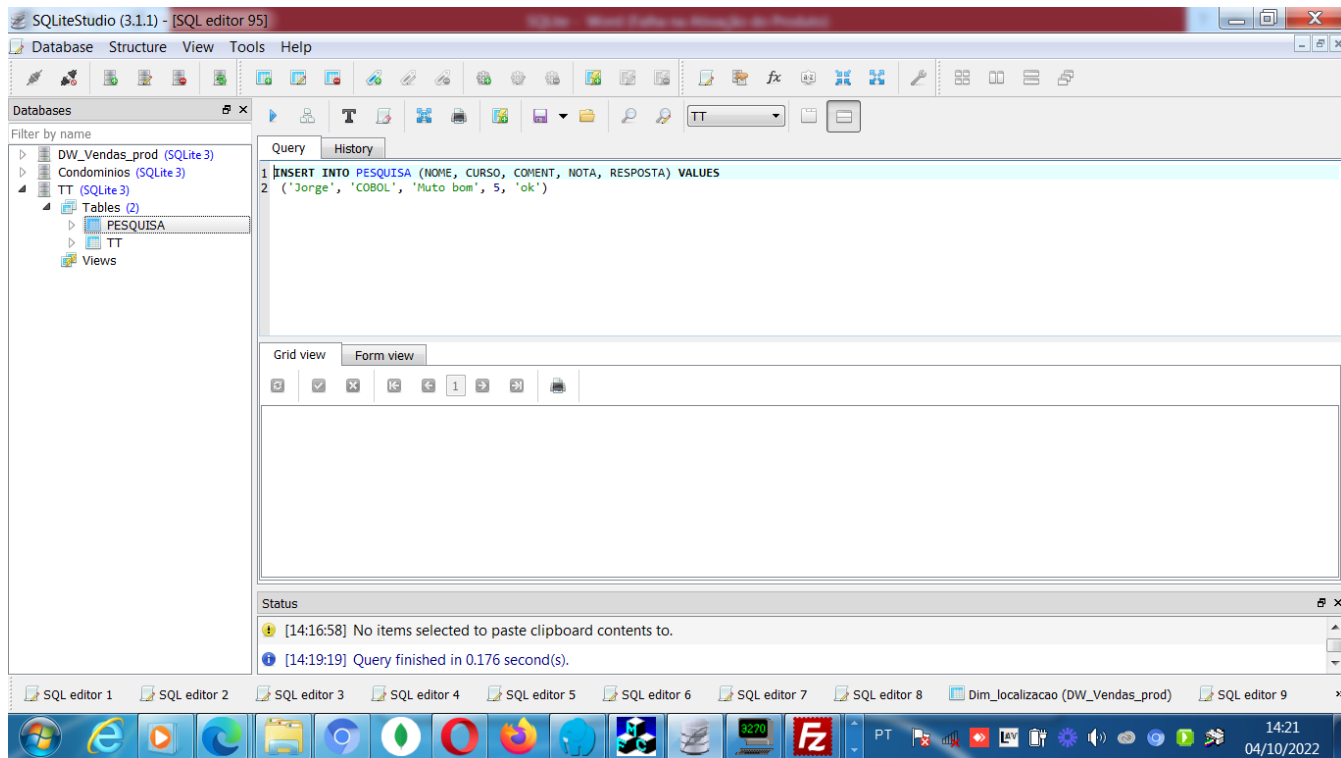


Comandos para o SQLite.

//Criamos a tabela no banco de dados, caso não exista.

```
CREATE TABLE IF NOT EXISTS PESQUISA (  
NOME VARCHAR(25) NOT NULL,  
CURSO VARCHAR(25) NOT NULL,  
COMENT VARCHAR(25) NOT NULL,  
NOTA FLOAT NOT NULL,  
RESPOSTA VARCHAR(25) NOT NULL);
```





SQLiteStudio (3.1.1) - [SQL editor 95]

Database Structure View Tools Help

Databases

Filter by name

- DW_Vendas_prod (SQLite 3)
- Condominios (SQLite 3)
- TT (SQLite 3)
 - Tables (2)
 - PESQUISA
 - TT
 - Views

Query History

```
1 INSERT INTO PESQUISA (NOME, CURSO, COMENT, NOTA, RESPOSTA) VALUES
2 ('Jorge', 'COBOL', 'Muito bom', 5, 'ok')
```

Grid view Form view

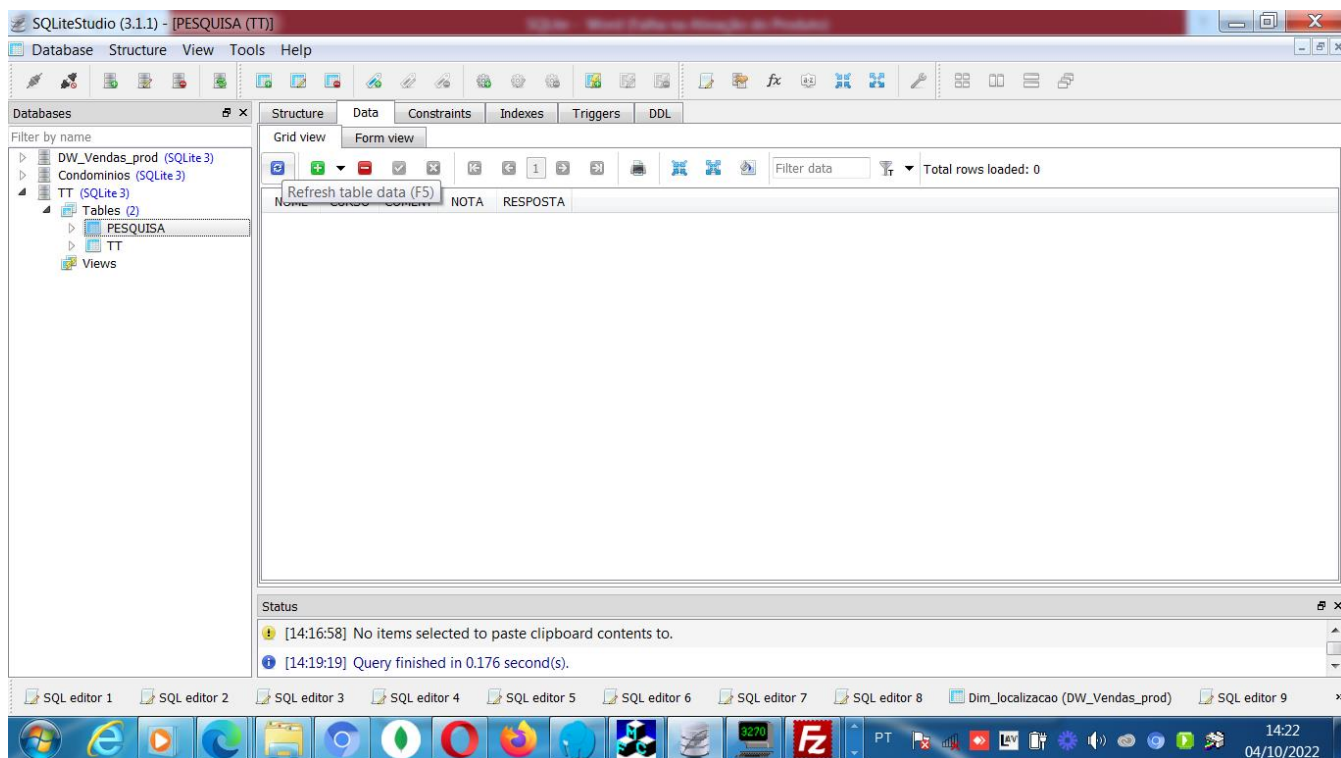
Status

[14:16:58] No items selected to paste clipboard contents to.

[14:19:19] Query finished in 0.176 second(s).

SQL editor 1 SQL editor 2 SQL editor 3 SQL editor 4 SQL editor 5 SQL editor 6 SQL editor 7 SQL editor 8 Dim_localizacao (DW_Vendas_prod) SQL editor 9

14:21 04/10/2022



SQLiteStudio (3.1.1) - [PESQUISA (TT)]

Database Structure View Tools Help

Databases

Filter by name

- DW_Vendas_prod (SQLite 3)
- Condominios (SQLite 3)
- TT (SQLite 3)
 - Tables (2)
 - PESQUISA
 - TT
 - Views

Structure Data Constraints Indexes Triggers DDL

Grid view Form view

Refresh table data (F5) Total rows loaded: 0

Nome	Curso	Coment	Nota	Resposta
------	-------	--------	------	----------

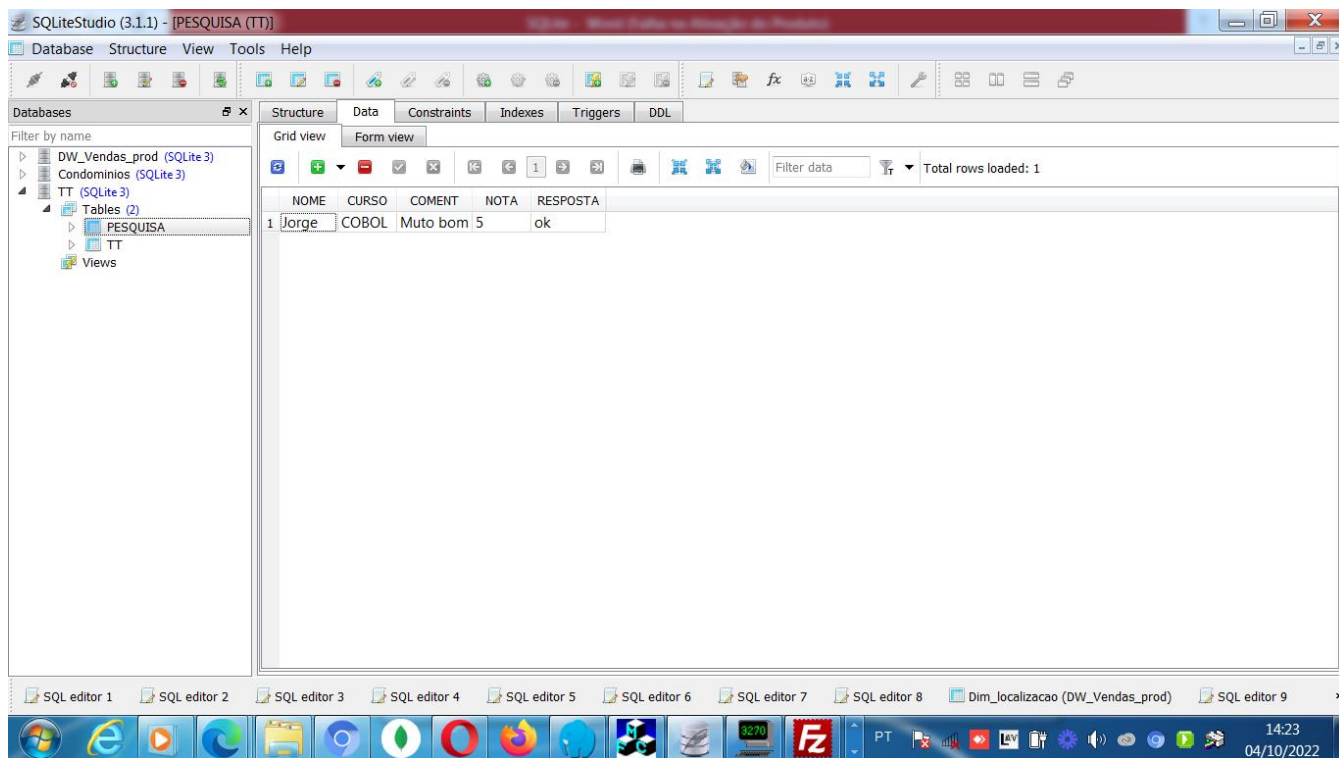
Status

[14:16:58] No items selected to paste clipboard contents to.

[14:19:19] Query finished in 0.176 second(s).

SQL editor 1 SQL editor 2 SQL editor 3 SQL editor 4 SQL editor 5 SQL editor 6 SQL editor 7 SQL editor 8 Dim_localizacao (DW_Vendas_prod) SQL editor 9

14:22 04/10/2022



//Fazer um insert na tabela.

```
INSERT INTO PESQUISA(NOME, CURSO, COMENT, NOTA) VALUES  
('$NOME', '$CURSO', '$COMENT', '$NOTA');
```

//Fazer uma pesquisa na tabela toda.

```
SELECT id, NOME, CURSO, COMENT, NOTA, RESPOSTA FROM  
PESQUISA2;
```

// Para fazer UPDATE na tabela

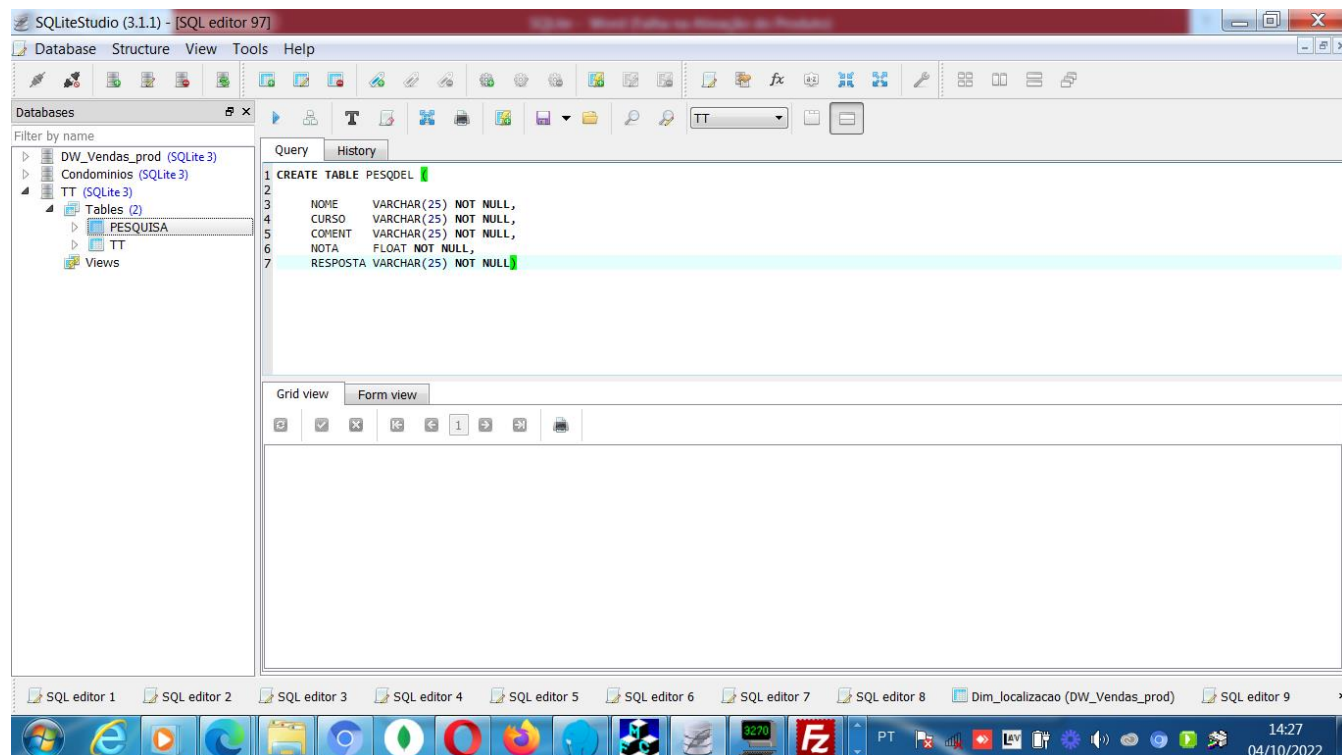
```
UPDATE PESQUISA2 SET NOME = 'Registro Alterado', NOTA = 333  
WHERE ID = 2 ;
```

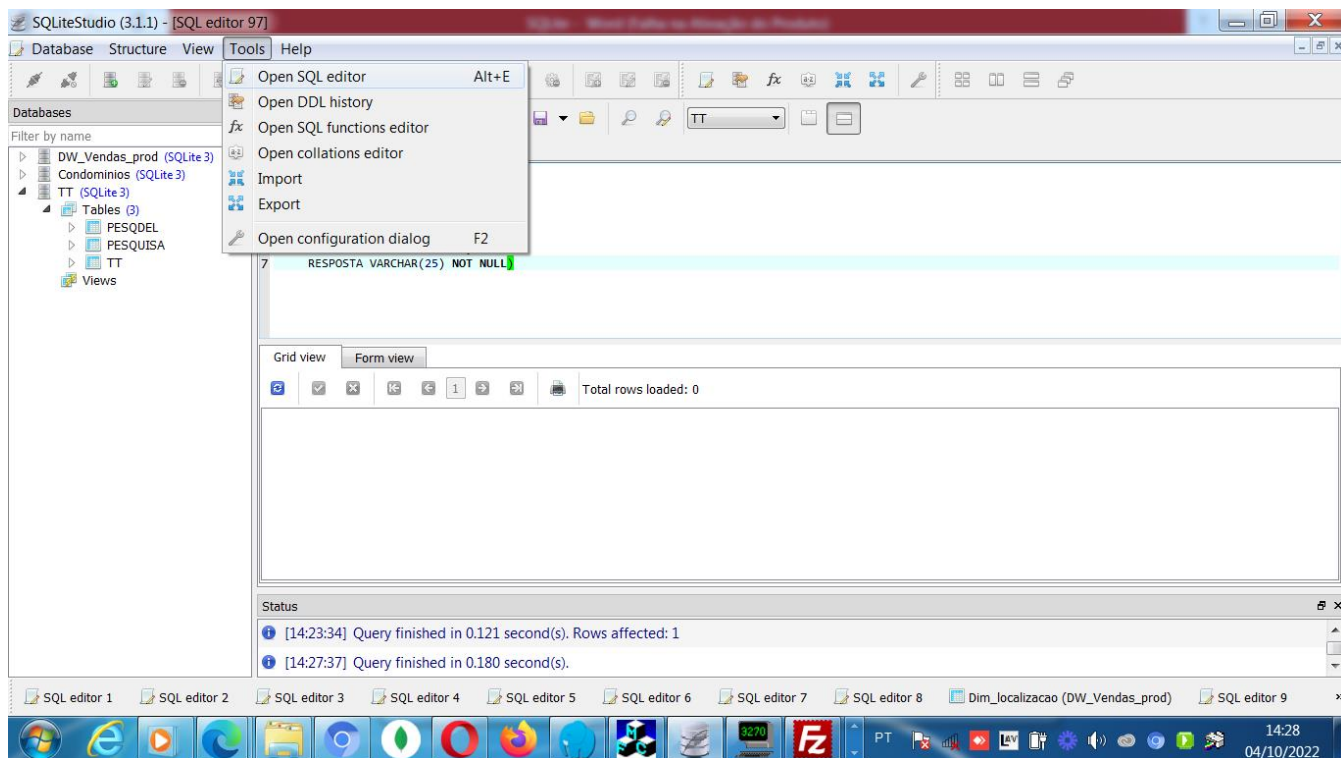
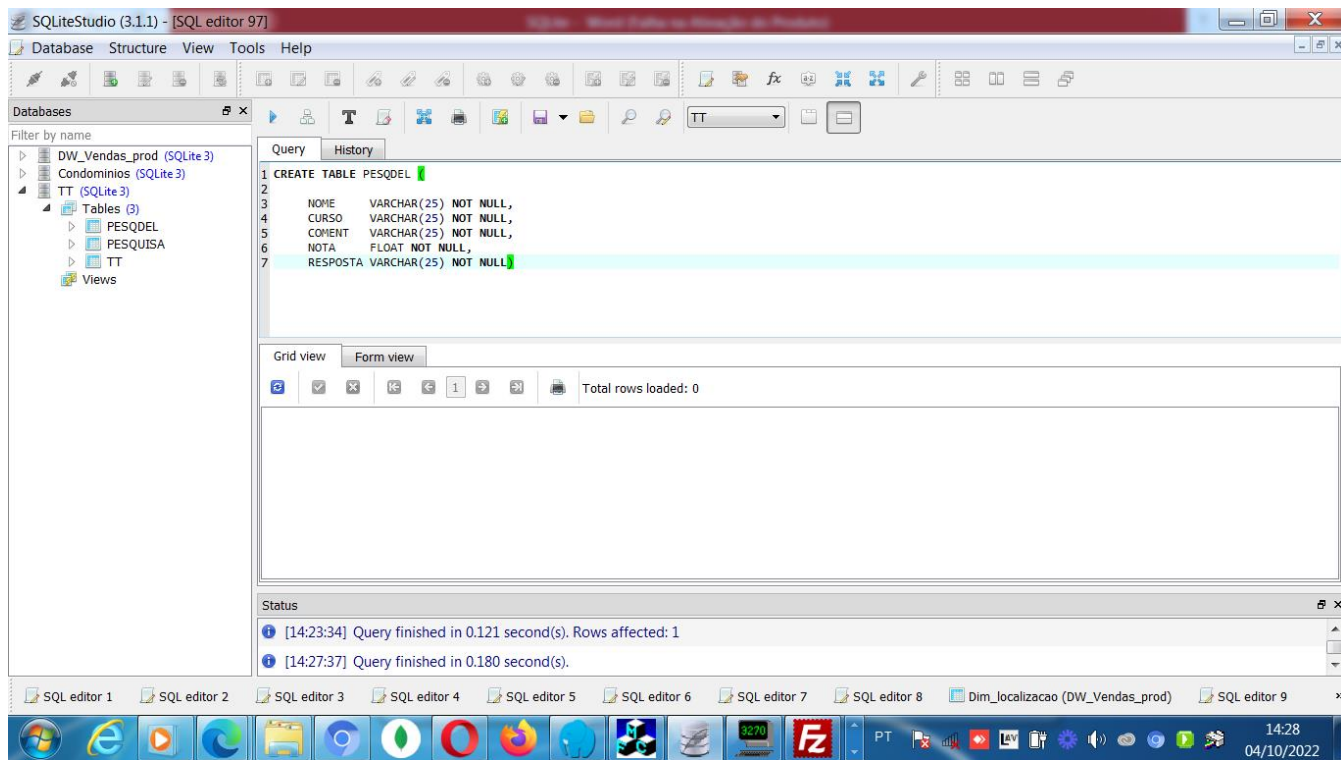
// Para deletar um registro da tabela

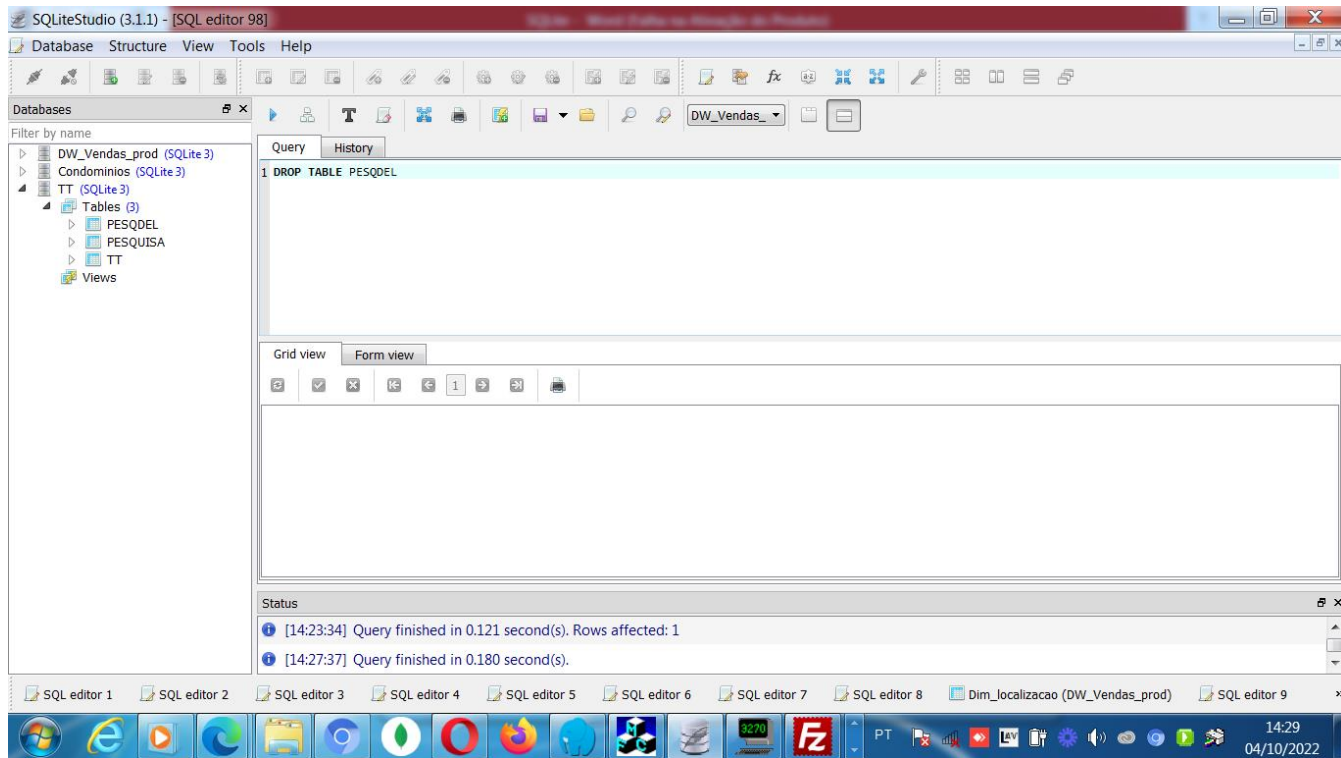
```
DELETE FROM PESQUISA2 WHERE ID = 3;
```

// Para Deletar a tabela

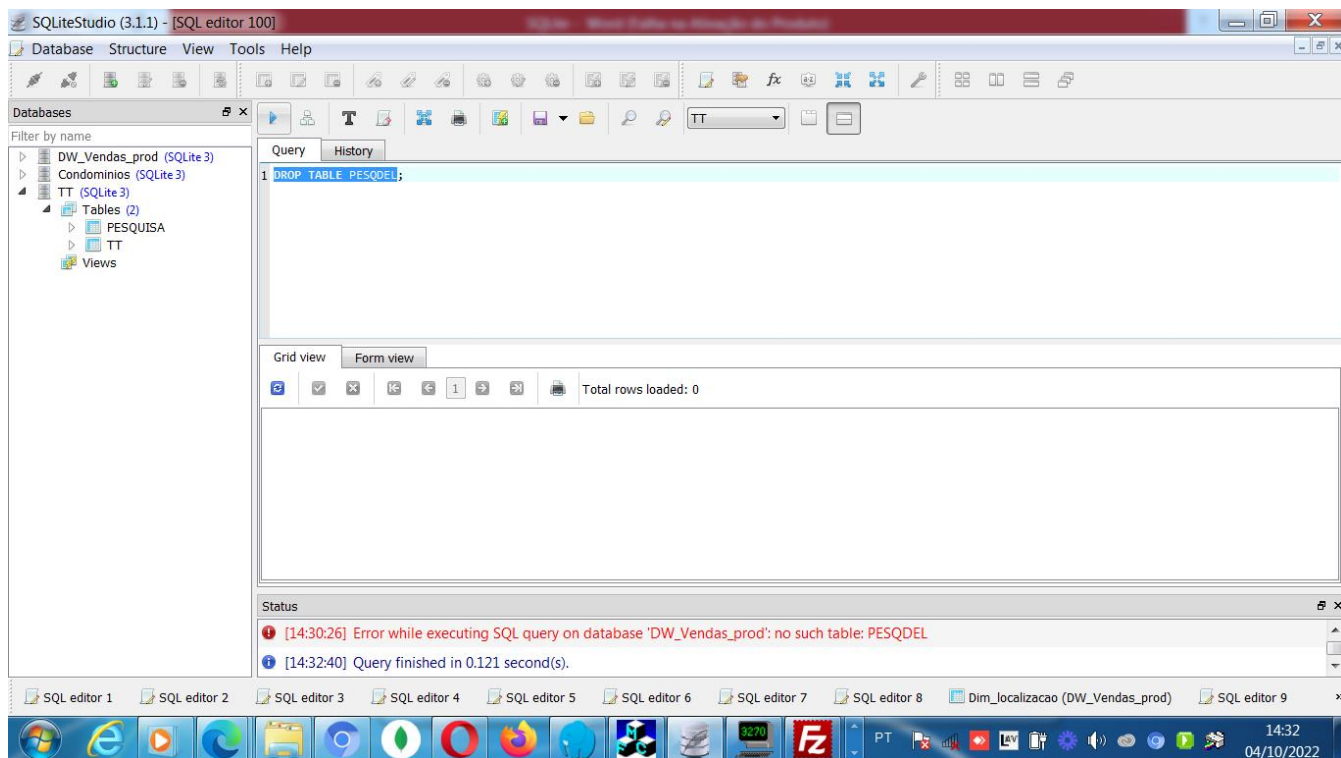
```
DROP TABLE PESQUISA;
```







The screenshot shows the SQLiteStudio 3.1.1 interface. The 'Databases' pane on the left shows a tree view with 'TT (SQLite 3)' expanded to show 'Tables (3)', including 'PESQDEL', 'PESQUISA', and 'TT'. The main query editor contains the text '1 DROP TABLE PESQDEL;'. The status bar at the bottom indicates two successful queries: '[14:23:34] Query finished in 0.121 second(s). Rows affected: 1' and '[14:27:37] Query finished in 0.180 second(s)'. The Windows taskbar at the bottom shows the time as 14:29 on 04/10/2022.



The screenshot shows the SQLiteStudio 3.1.1 interface. The 'Databases' pane on the left shows a tree view with 'TT (SQLite 3)' expanded to show 'Tables (2)', including 'PESQUISA' and 'TT'. The main query editor contains the text '1 DROP TABLE PESQDEL;'. The status bar at the bottom shows an error: '[14:30:26] Error while executing SQL query on database 'DW_Vendas_prod': no such table: PESQDEL' and a subsequent successful query: '[14:32:40] Query finished in 0.121 second(s)'. The Windows taskbar at the bottom shows the time as 14:32 on 04/10/2022.

